

The advertisement features a background of several overlapping green geometric shapes on the left side. On the right, there are three open paint cans with metallic rims. The top can shows a living room scene. The middle can contains a teal circle with the text 'List of products'. The bottom can is filled with dark paint. A paintbrush with a wooden handle and natural bristles lies on the grey concrete surface in the bottom right corner.

ETERNAL[®]

water-based paints

List of
products

usage - overview

page



ROOF COATINGS

| | |
|-----------|-------------------------------------|
| 10 | ETERNAL anti-corrosion acrylate |
| 5 | ETERNAL matt acrylate |
| 9 | ETERNAL for metals |
| 15 | ETERNAL for roofs |
| 12 | ETERNAL grease remover |
| 42 | FORTE penetral |
| 16 | SANAKRYL TOP |
| 17 | SANAKRYL TOP Thermo |
| 58 | Reinforcement fabric for SANAKRYL |
| 64 | ETERNAL antifungal deep penetration |



METAL COATINGS

| | |
|-----------|---------------------------------|
| 10 | ETERNAL anti-corrosion acrylate |
| 8 | ETERNAL high gloss acrylate |
| 5 | ETERNAL matt acrylate |
| 6 | ETERNAL matt Revital |
| 9 | ETERNAL for metals |
| 14 | ETERNAL for heating radiators |
| 12 | ETERNAL grease remover |
| 11 | ETERNAL grease remover DIRECT |
| 7 | ETERNAL semi-gloss acrylate |



CONCRETE COATINGS

| | |
|-----------|-------------------------------------|
| 43 | FORTE adhesive primer |
| 26 | ETERNAL concrete stain |
| 25 | ETERNAL epoxy stabil |
| 52 | ETERNAL hydrophobic paint W |
| 24 | ETERNAL silica filler |
| 22 | ETERNAL varnish for concrete |
| 5 | ETERNAL matt acrylate |
| 13 | ETERNAL for swimming pools |
| 23 | ETERNAL for concrete KOMFORT |
| 19 | ETERNAL refurbishing varnish |
| 20 | ETERNAL rop-izol |
| 21 | ETERNAL stabil |
| 42 | FORTE penetral |
| 18 | SANAKRYL acrylic varnish PROFI/OR |
| 64 | ETERNAL antifungal deep penetration |

FLOOR COATINGS

| | page |
|----|-------------------------------------|
| 26 | ETERNAL concrete stain |
| 25 | ETERNAL epoxy stabil |
| 24 | ETERNAL silica filler |
| 22 | ETERNAL varnish for concrete |
| 13 | ETERNAL for swimming pools |
| 23 | ETERNAL for concrete KOMFORT |
| 20 | ETERNAL rop-izol |
| 21 | ETERNAL stabil |
| 36 | FORTEKRYL floor varnish |
| 42 | FORTE penetral |
| 64 | ETERNAL antifungal deep penetration |

WOOD COATINGS

| | |
|----|-----------------------------------|
| 8 | ETERNAL high gloss acrylate |
| 5 | ETERNAL matt acrylate |
| 6 | ETERNAL matt Revital |
| 40 | ETERNAL wood primer |
| 7 | ETERNAL semi-gloss acrylate |
| 35 | FORTEKRYL indoor varnish |
| 34 | FORTEKRYL woodstain KLASIK |
| 33 | FORTEKRYL woodstain PREMIUM |
| 39 | FORTEKRYL wood penetrating primer |
| 36 | FORTEKRYL floor varnish |
| 37 | FORTEKRYL outdoor varnish |
| 38 | FORTEKRYL wax oil |

PAINTWORK COATINGS

| | |
|----|--------------------------------------|
| 27 | ETERNAL IN |
| 28 | ETERNAL IN plus |
| 32 | ETERNAL IN silver |
| 31 | ETERNAL IN steril |
| 29 | ETERNAL IN stop |
| 30 | ETERNAL IN Thermo |
| 65 | ETERNAL mould remover |
| 41 | ETERNAL universal penetrating primer |
| 64 | ETERNAL antifungal deep penetration |

SPECIAL COATINGS AND DISINFECTANTS

page

| | |
|----|-------------------------------------|
| 67 | ETERNAL disinfectant |
| 53 | ETERNAL elast |
| 66 | ETERNAL disinfecting hand gel |
| 32 | ETERNAL IN silver |
| 31 | ETERNAL IN steril |
| 29 | ETERNAL IN stop |
| 30 | ETERNAL IN Thermo |
| 65 | ETERNAL mould remover |
| 20 | ETERNAL rop-izol |
| 51 | SANATHERM B silicone PREVENSIL |
| 64 | ETERNAL antifungal deep penetration |

CEMENT PREPARATIONS AND WATERPROOFING

| | |
|----|-----------------------------------|
| 59 | FORTE butyl sealing belt |
| 61 | FORTE concrete repair |
| 42 | FORTE penetral |
| 60 | FORTE sealing belt PROFI |
| 62 | FORTE levelling agent |
| 63 | FORTE BAK |
| 56 | FORTISOL |
| 55 | FORTISOL 1K |
| 54 | FORTISOL UNI |
| 16 | SANAKRYL TOP |
| 17 | SANAKRYL TOP Thermo |
| 57 | SANATHERM LZH |
| 58 | Reinforcement fabric for SANAKRYL |

FACADE COATINGS AND PLASTERS

| | |
|----|-------------------------------------|
| 53 | ETERNAL elast |
| 65 | ETERNAL mould remover |
| 49 | SANATHERM B acrylate |
| 50 | SANATHERM B silicone |
| 51 | SANATHERM B silicone PREVENSIL |
| 57 | SANATHERM LZH |
| 48 | SANATHERM O acrylate plaster |
| 47 | SANATHERM O silicone plaster |
| 44 | SANATHERM PN |
| 46 | SANATHERM PNO |
| 45 | SANATHERM PNO silicone |
| 64 | ETERNAL antifungal deep penetration |

ETERNAL[®]

matt acrylate

paints | matte | universal

single paint for various surfaces

Satin matt, highly durable, water-based paint for construction elements, roofs, and structures where the substrate is zinc coated steel sheet including non-oxidized, metals, wood, concrete, uncoated ceramic.

ETERNAL matt acrylate is intended for new and maintenance coating of zinc coated steel metal even without prior oxidization, primer-coated steel sheets, aluminum (check adhesion first), copper, uncoated ceramic roofing materials, non-walkable wooden or concrete surfaces, and other construction materials. This high-quality paint is suitable also for industrial applications.

Spreading rate: zinc-coated steel, aluminum, outer concrete 0,28-0,30 kg/m² wood, chipboard 0,35-0,40 kg/m²

Packaging: 0,7 kg, 2,8 kg, 5 kg, 10 kg

Tinting: Yes



| | | |
|----------------|--------------------|------------------|
| 01 white | 09 dark brown | 021 medium brown |
| 02 light grey | 010 rosewood | 022 dark green |
| 03 medium grey | 013 black | 023 sour cherry |
| 04 anthracite | 014 ivory | 024 natural wood |
| 05 yellow | 016 blue | |
| 06 green | 017 light yellow | COOL anthracite |
| 07 red-brown | 018 strawberry red | |
| 08 brick red | 019 light brown | |



for **30** years
delivering trusted
quality

ETERNAL[®] matt Revital



paints | matte | universal

for renovation of old paints

Water-based paint suitable for renovation of old coatings on furniture, windows, doors, door frames, radiators, indoor and garden furniture, toys, benches, playground structures.

ETERNAL matt Revital is a water-based paint for indoor and outdoor applications intended for wood and metal surfaces that were previously treated with anti-corrosive coating, chipboard, plasterboard, and non-walkable concrete. Its very good adhesion to old synthetic and oil-based paints makes it a great choice for renovation works. Complies with EU toy safety standards.

Spreading rate: 0,20–0,35 kg/m²

Packaging: 0,1 kg, 0,35 kg, 0,7 kg, 2,8 kg, 10 kg

Tinting: Yes



| | | |
|---------------------|---------------------|-----------------------|
| RAL 9003 white | RAL 3020 red | RAL 9005 black |
| RAL 1015 ivory | RAL 5015 blue | RAL 6018 yellow-green |
| RAL 1019 grey-beige | RAL 7035 light grey | RAL 6005 green |
| RAL 1028 yellow | RAL 7016 anthracite | RAL 8017 dark brown |



ETERNAL[®]

semi-gloss acrylate



paints | semi-gloss | **universal**


satin finish

A universal water-based paint for semi-gloss coating of wood, metal, concrete.

ETERNAL semi-gloss acrylate is intended for both indoor and outdoor coating of wood, chipboard, cement particle board, plasterboard, non-walkable concrete and metal substrates that were previously treated with anti-corrosive coating. Suitable for windows, doors, window and door frames, heating radiators, furniture, shelves, benches, playground structures. Suitable for new and renovation paints wherever high gloss finish is not desirable but where easy maintenance of surfaces is required. Not designed for concrete floors.

Spreading rate: 0,24–0,35 kg/m²

Packaging: 0,35 kg, 0,7 kg, 2,8 kg

Tinting: pastels 

RAL 9003 white

RAL 1015 ivory

RAL 8017 dark brown



ETERNAL[®]

high gloss acrylate



paints | high gloss | universal

ideal for windows and doors

A water-based coating for indoor and outdoor high-gloss, highly durable coatings of wooden and metal structures.

ETERNAL high gloss acrylate is intended for both indoor and outdoor high-gloss coating of wood, wood fiber board, chipboard, plasterboard, concrete and metal substrates that were previously treated with anti-corrosive coating. Highly UV- and weather-resistant. Suitable for window and door frames and heating radiators.

Spreading rate: 0,28–0,33 kg/m²

Packaging: 0,7 kg, 5 kg, 10 kg

Tinting: Yes



| | | |
|---------------------|--------------------|---------------------|
| RAL 9003-white | RAL 1028 yellow | RAL 6029 dark green |
| RAL 1015 ivory | RAL 3020 red | RAL 8017 dark brown |
| RAL 7035 light grey | RAL 5005 dark blue | RAL 9005 black |



ETERNAL[®]

for metals

paints | metal protection | **universal**


for all types of metal substrates

A self-priming coating for all types of metal substrates.

ETERNAL for metals is intended as both a primer and finish for metal structures, fences, railings, sheet metal roofings, masts, outer surfaces of tanks, pipes, metal furniture. Highly adhesive, provides anti-corrosion resistance in the entire layer, highly UV- and weather-resistant. Forge-like hues are designed for fences, gates, railings, metal furniture and forge products.

Spreading rate: 0,12–0,17 kg/m² (1 layer)

Packaging: 0,35 kg, 0,7 kg, 5 kg, 10 kg

Tinting: Yes 

| | | |
|----------------|---------------------|-----------------|
| 401 white | 413 black | 460 forge black |
| 402 light grey | 423 sour cherry | |
| 406 green | 441 silver | COOL anthracite |
| 407 red-brown | 442 copper | COOL black |
| 410 rosewood | 454 forge dark grey | |



ETERNAL[®]

anti-corrosion acrylate

paints | metal protection | **universal**

anti-corrosion primer

An anti-corrosion coating for priming metal structures.

ETERNAL anti-corrosion acrylate is intended as a primer to protect metal structures against corrosion. Can be applied to steel, cast iron, and light metals. It is suitable also for hybrid structures where steel mixes with new unoxidized zinc-coated sheet metal.

ETERNAL anti-corrosion acrylate should be applied in 2 layers on a thoroughly cleaned and degreased metal substrate. For the most effective degreasing, use **ETERNAL grease remover** or **ETERNAL grease remover DIRECT**.

Spreading rate: 0,12–0,16 kg/m² (1 layer)

Packaging: 0,7 kg, 5 kg, 10 kg

red-brown

grey



ETERNAL[®]

grease remover DIRECT



paints | metal protection | **special**

for professional metal degreasing

A water-based concentrate for the preparation of a highly effective, non-foaming degreasing agent. Cleans medium-degree grease-stained surfaces and removes petroleum oil and other types of grease. Suitable for manual degreasing as well as soaking vats and machinery. Does not contain hydroxides.

ETERNAL grease remover intended for cleaning and degreasing of metal surfaces, floors, old paints, and other surfaces before coating with either water-based or solvent-based paints. Suitable for washing of engines, in repair shops, electroplating shops, paint shops, professional industrial degreasing of metals etc.

Spreading rate: Depends on the amount of grease deposits

Packaging: 0,75 kg



for
direct application

ETERNAL[®]

grease remover

1:10

concentrate

paints | metal protection | **special**

for professional metal degreasing

A water-based concentrate for the preparation of a highly effective, non-foaming degreasing agent. Cleans medium-degree grease-stained surfaces and removes petroleum oil and other types of grease. Suitable for manual degreasing as well as soaking vats and machinery. Does not contain hydroxides.

ETERNAL grease remover intended for cleaning and degreasing of metal surfaces, floors, old paints, and other surfaces before coating with either water-based or solvent-based paints. Suitable for washing of engines, washing in repair shops, electroplating shops, industrial cleaning of glass etc.

Spreading rate: Depends on the amount of grease deposits

Packaging: 0,5 kg, 5 kg



ETERNAL[®]

for swimming pools



paints | swimming pools | **special**

for swimming pool surface treatment

Water-based paint intended primarily for swimming pool surface treatment, with long-lasting resistance to water and swimming pool chemicals.

ETERNAL for swimming pools is intended for coating of concrete swimming pools and adjacent surfaces, laminate ships, garden pools and vats. Due to its excellent water resistance and good adhesion to anti-corrosive paint, it can be used also for metal pools treated with a high-quality anti-corrosive primer.

Spreading rate: 0,30–0,50 kg/m²

Packaging: 1 kg, 5 kg



light blue

ETERNAL[®]

for heating radiators

paints | metal protection | special

for high-gloss finish of heating radiators

A water-based coating for high-gloss finish of heating radiators.

ETERNAL for heating radiators is a special water-based enamel finish for central heating radiators. Creates a high-gloss, elastic yet hard finish resistant to heat to up to 100 °C that will not yellow. Features great hiding power, levels perfectly, dries fast, and adheres very well to old synthetic paints. Use **ETERNAL anti-corrosive acrylate** or **ETERNAL for metals** as a primer for steel and cast iron radiators. Use **ETERNAL matt acrylate** as a primer for copper surfaces. **ETERNAL for heating radiators** is suitable for new coatings as well as for refurbishment.

Spreading rate: 0,28–0,33 kg/m²

Packaging: 0,7 kg, 3 kg

Tinting: pastels



0100-white



ETERNAL[®]

for roofs

roof paints | roofs | special

a single layer will do

Permanently elastic paint for a protective coating and minor repairs of cement-fiber, concrete, and bitumen roofing that significantly extends the lifespan of these materials.

ETERNAL for roofs is intended for maintenance of roofing materials including cement fiber, concrete, non-glazed ceramic roof tiles and wooden shingles on roofs with a slope not smaller than 10°. Suitable also for bitumen-based roofings. Once dry, **ETERNAL for roofs** creates a watertight layer with very good adhesion to the substrate, long life, resistance to UV radiation, and permanent elasticity even at low temperatures. **ETERNAL for roofs** can be used to hide and seal minor fractures in the substrate.

Spreading rate: 0,50–0,55 kg/m²
(cement fiber board, concrete, ceramic roof tiles)
0,50–1,00 kg/m² (bitumen belts)

Packaging: 5 kg, 10 kg

301 white

302 grey

306 green*

307 red-brown

309 brown

323 sour cherry

brick red*

anthracite

* hue to order only



another
20
years of life
for
your roof

SANAKRYL[®] TOP

for repairs and moisture protection
of flat roofs

roof paints | flat roofs | bitumen belts, PUR foam

Waterproofing screed for repairs and moisture protection of flat roofs with bitumen belts and PUR foam.

SANAKRYL TOP is intended for maintenance and repairs of flat roofs with bitumen belts and for protective coating of rooftop PUR foam insulation. The paint can be applied also to roof plumbing. The paint creates a permanently elastic seamless watertight film with extremely low water absorption. In combination with reinforcement fabric, **SANAKRYL TOP** forms a waterproofing system for repair of flat roof with a slope of no less than 1° and long-term permanent exposure to water, but not longer than 6 months without drying out.

Spreading rate: 0,50–1,00 kg/m² protective coating
2,50–3,00 kg/m² waterproofing system in combination
with reinforcement fabric

Packaging: 25 kg

white

red-brown

light grey

brick red*

anthracite*

* hue to order only



SANAKRYL[®] TOP

Thermo

Roof coatings | Flat roofs | Bitumen sheets, PUR foam

for coatings, repairs, and refurbishments of flat roofs with thermal insulation properties

Hydro-insulating filler with thermal insulation properties for coating, repairing, and refurbishing flat roofs made of bitumen sheets and PUR foam.

SANAKRYL TOP Thermo, together with a reinforcing fabric, forms a waterproofing system for repairing flat roofs with a slope of at least 1° and continuous water exposure of up to six months, provided that drying is not interrupted. In this system, **SANAKRYL TOP Thermo** is used as both the primer and the final topcoat. This system is used for the protection, maintenance, and refurbishment of older roofing made of bitumen sheets and fiber cement (ETERNIT). It is also suitable for the maintenance and repair of membrane waterproofing systems. **SANAKRYL TOP Thermo** can be advantageously used on roofs where enhanced thermal insulation is required. **SANAKRYL TOP Thermo** can also serve as a protective coating for new roof insulation made of PUR foam. At the same time as the roof coating, **SANAKRYL TOP Thermo** can also be used to coat roof plumbing elements made of galvanized sheet metal, aluminum sheet, or coated metal, providing corrosion protection.

Consumption: Protective coating 0.5–1.0 kg/m²
Protective coating for PUR roof foam 1.0 kg/m²
Waterproofing system with fabric 2.5–3.0 kg/m²

Packaging: 20 kg

white RAL 9003



SANAKRYL[®]

acrylic varnish PROFI/OR

one-component, water-dilutable acrylic varnish for exposed surfaces

Coating materials | Renovation | **Special**

SANAKRYL acrylic varnish PROFI/OR is a one-component, transparent, water-dilutable coating material for exterior use.

SANAKRYL acrylic varnish PROFI/OR is characterized by excellent adhesion to concrete, glass-fiber reinforced concrete, cement-bonded façade panels, and acrylic coatings. **SANAKRYL acrylic varnish PROFI/OR** forms a silky matte film with high weather and light resistance, very good resistance to lime efflorescence, and strong resistance to moss and lichen growth on the surface. Prevents dust formation on exposed concrete surfaces. It can also be used for surface treatment of metal sheets that have been primed with an anti-corrosion coating. Not suitable for walkable surfaces.

Consumption: 0.10–0.20 kg/m² (1 coat), depending on the absorbency and texture of the substrate

Packaging: 10 kg

Tinting: selected RAL shades



transparent



ETERNAL[®]

refurbishing varnish

paints | refurbishing | special

ETERNAL refurbishing varnish is a single-component, water-based outdoor paint.

ETERNAL refurbishing varnish is highly weather resistant, lightfast, and resistant to moss and lichen growth. The coat is not permanently walkable. **ETERNAL refurbishing varnish** is intended primarily for renewal of older mosaic plasters, non-walkable concrete elements, concrete roofings, granulated roofings, and coating of stone, bricks, cement fiber boards, cement particle boards and other mineral substrates.

Spreading rate: 0,20–0,25 kg/m² (2 layers), depending on absorbency and texture of the substrate

Packaging: 1 kg, 5 kg

Tinting: selected RAL shades



transparent

**single-component acrylate varnish
for outdoor applications**



ETERNAL[®]

rop-izol



floor paints | concrete protection | **special**

prevents contamination

Water-based, abrasion resistant paint for the protection of concrete and concrete floors with insulating properties, temporarily resistant to oil products and some chemicals, with low CO₂ and SO₂ permeability.

ETERNAL rop-izol is an indoor and outdoor paint for concrete substrates, cement screed, and lime-cement plaster. Serves as a proofing paint for interception pits and concrete floors to prevent leakage of oil spills into the substrate and as a coating of surfaces to prevent contamination of the surrounding environment with oil products and to protect against leakage of certain chemicals.

Spreading rate: 0,40–0,50 kg/m² indoor concrete floors
0,50–0,80 kg/m² outdoor concrete floors
1,00–1,20 kg/m² interceptor pits

Packaging: 10 kg

grey



ETERNAL[®]

stabil

floor paints | concrete protection | **outdoor/indoor**

anti-skid surface

Water-based paint with waterproofing properties for concrete surfaces.

ETERNAL stabil is intended for coating concrete surfaces, concrete tiles, interlocking concrete pavers, concrete floors of balconies, terraces, pavements, garages, basements, warehouses. The final paint has a matt finish, anti-skid surface, great abrasion resistance, good adhesion to concrete substrates, waterproofing properties, and a very good weather resistance. **ETERNAL stabil** makes concrete surfaces easier to maintain. **ETERNAL stabil** is certified for direct contact with food.

Spreading rate: 0,40–0,50 kg/m²

Packaging: 2,5 kg, 5 kg, 10 kg

Tinting: Yes



white

light grey

grey

green



ETERNAL

varnish for concrete



floor paints | concrete protection | **outdoor/indoor**

high-durability single-component varnish

Solvent-free high-durability varnish for impregnation treatment and thin-layer coating of mineral substrates, both indoors and outdoors.

ETERNAL varnish for concrete is intended for coating of marble surfaces, concrete or stone pavers, and concrete, natural stone or terrazzo tiles. Its excellent properties make it an ideal solution for busy locations, such as warehouses, workshops, exhibition facilities and stores. **ETERNAL varnish for concrete** penetrates deep into the substrate and creates a hard glossy transparent layer with anti-skid properties, extreme chemical resistance and heat resistance. For direct application, does not require thinning.

Spreading rate: 0,08 – 0,12 kg/m² in two layers

Packaging: 0,35 kg, 0,7 kg, 2,5 kg

RAL 7038

transparent



extremely high resistance
to chemicals

ETERNAL[®]

for concrete KOMFORT

floor paints | concrete protection | **indoor**

two-component epoxide matt enamel

Two-component epoxide matt enamel applicable to freshly laid concrete.

ETERNAL for concrete KOMFORT is a versatile product usable as a penetrating primer, paint, or self-leveling flooring. Designed for coating indoor concrete floors in basements, garages, workshops, stores, warehouses, exhibition facilities, etc. The coating is highly resistant to abrasion, water, hot tires, chemical thawing substances, aliphatic and aromatic hydrocarbons, diluted acids, alkaline substances, and sanitation solutions. Due to its high vapor permeability, the product is also applicable to freshly laid concrete (hardening approx. 7 days). Mixed thoroughly with **ETERNAL silica filler**, **ETERNAL for concrete KOMFORT** can be used as a self-leveling screed.

Spreading rate: paint 0,15-0,20 kg/m² (1 layer)
self-leveling screed 1,1 (paint) + 1,1 (filler) kg/m²/
thickness 1 mm

Packaging: 4,8 kg (4 + 0,8 kg)

Tinting: Yes



white

grey



3v1

3-in-1
penetrating primer - concrete
paint - self-levelling screed

ETERNAL

silica filler

floor paints | concrete protection | **indoor**

loose mixture that serves as a component of self-leveling screed

Loose silica filler that serves as a component of self-leveling screeds or an agent increasing the coarseness of finishes.

ETERNAL silica filler contains pure, sorted hard silica sands. Combines with **ETERNAL for concrete KOMFORT** to form a self-leveling screed. Can be used also to increase the coarseness of surface-treated concrete floors in basements, garages, workshops, stores, warehouses, exhibition facilities, etc., and to create a texture on facade plaster.

Spreading rate: self-leveling screed: 1 kg (paint)/1 kg (filler), coarsening the surface prior to painting: 0,05-0,20 kg/1 kg of paint

Packaging: 4,8 kg



ETERNAL[®]

epoxy stabil

floor paints | concrete protection | **indoor**

two-component water-based
epoxide enamel

Two-component water-based epoxide enamel for highly durable coatings of indoor concrete floors.

ETERNAL epoxy stabil is intended for treatment of concrete surfaces in basements, garages, workshops, stores, warehouses, exhibition facilities, etc. Also suitable for all types of indoor concrete surfaces, anhydrite floors, cement-lime and cement plasters, wood, wood fiber board, chipboard, and plasterboard.

Spreading rate: 0,40–0,50 kg/m²

Packaging: 10 kg (5 + 5 kg)

Tinting: Yes



white

light grey



ETERNAL[®]

concrete stain

floor coatings | concrete protection | exterior
interior | unifying the appearance of concrete surfaces

**water-based paint to revive, colour and unify
the appearance of concrete surfaces**

ETERNAL concrete stain is designed for exterior and surface treatment of concrete surfaces, concrete tiles, concrete interlocking pavers and concrete floors.

It can also be used on sandstone and some other types of building stone. **ETERNAL concrete stain** is not suitable for coatings permanently placed under water. It is not suitable for smoothed concrete substrates without prior roughening.

Spreading rate: 0,10–0,15 kg/m² (1 layer)

Packaging: 1,8 kg, 4,5 kg

Tinting: selected RAL shades



| |
|-------------|
| transparent |
| grey |
| anthracite |
| sandy |
| red |



ETERNAL[®]

IN

indoor paints | paints | shiny white

abrasion-resistant paint
with great hiding power

Indoor dispersion paint for extreme whiteness.

ETERNAL IN is a water-based, shiny white, nicely perfumed indoor paint with great hiding power and easy to apply. Its good vapor permeability and dry abrasion resistance makes it ideal for indoor plasterboard walls; mineral, gypsum-based, and acrylate plasters; concrete (both panels and monoliths); fiber cement board, fiber plaster board, and chipboard; certain types of wallpapers, and other absorbent substrates. Suitable also for application on moisture-protective plasters.

Spreading rate: 0,20–0,30 kg/m²

Packaging: 1 kg, 3 kg, 6 kg, 12 kg, 18 kg, 40 kg

Tinting: pastels



white



guaranteed
whiteness no less than
95% MgO

ETERNAL[®]

IN plus

indoor paints | paints | tintable


abrasion resistant,
tintable with a wide range of hues

ETERNAL IN plus is a modern tintable indoor paint with great hiding power and light fresh perfume.

ETERNAL IN plus is intended for indoor plasterboard walls, mineral or acrylate plaster, concrete, fiber cement board and chipboard, and other absorbent substrates. The paint is particularly well suited for interiors of public buildings, such as schools, hospitals, restaurants, waiting rooms, etc. where high abrasion resistance is required.

Spreading rate: 0,20-0,30 kg/m²

Packaging: 1 kg, 5 kg, 10 kg

Tinting: Yes 



white

ETERNAL[®]

IN stop

indoor paints | paints | **special**

A sealing paint that prevents substrate discoloration from bleeding to the topcoat.

ETERNAL IN stop prevents discoloration of fresh paint by substrate blemishes. The paint effectively seals discoloration caused by smoking, previous paints, water leaks, corrosion, soot etc., as well as blemishes in wood and chipboard to be coated with dispersion paints etc.

Spreading rate: 0,20-0,30 kg/m² 1-2 layers

Packaging: 1 kg, 5 kg

white

100% hides any discoloration



ETERNAL[®]

IN Thermo



indoor paints | thermal insulation paints | **special**


...and the warmth will stay in

Thermal insulation paint.

ETERNAL IN Thermo increases the surface temperature of cold walls, preventing condensation of air humidity. Stops cold from permeating to the interior through the walls, prevents mould growth, eliminates the effect of thermal bridges, and improves the thermal comfort in the room. **ETERNAL IN plus** is intended for treatment of indoor walls coated with rendering coat, mineral or acrylate plaster, and concrete panels.

Spreading rate: 0,30–0,40 kg/m²

Packaging: 0,9 kg, 4 kg

Tinting: pastels 

white



ETERNAL[®]

IN steril



indoor paints | moulder preventing paints | **special**

prevents mould and bacteria

A paint permanently blocking growth of mould and bacteria.

ETERNAL IN steril is a white indoor dispersion paint preventing biological infestation of walls by fungi, bacteria, and other types of germs. Ideal for environments that need to remain perfectly sterile, in high-humidity environments and in environments with a high risk of mould and bacteria infestation. Helps create a healthy environment in households, especially for people suffering from allergies or asthma. Permeable to vapor, resistant to both wet and dry abrasion.

Use biocidal products safely! Always read information on the packaging and the attached leaflet.

Spreading rate: 0,20–0,30 kg/m²

Packaging: 1 kg, 4 kg, 12 kg

Tinting: pastels



white



ETERNAL[®]

IN silver



indoor paints | antibacterial paints | **special**

**antibacterial paint with silver particles
for surfaces under extreme load**

Antibacterial paint with silver particles.

ETERNAL IN silver is an antibacterial paint with colloidal silver for sanitary coatings with long-lasting resistance to bacterial contamination. The coat is in the highest scrubbing class and completely odorless. Suitable for interiors with strict requirements for sanitation and abrasion resistance, in particular humid rooms with insufficient air flow, such as kitchens, bathrooms, laundry rooms, technical rooms, children's rooms, schools, kindergartens, health care facilities, and the food industry.

Use biocidal products safely! Always read information on the packaging and the attached leaflet.

Spreading rate: 0,20–0,30 kg/m²

Packaging: 1 kg, 4 kg, 12 kg

Tinting: Yes



white



fortekryl[®]

woodstain premium



wood protection | woodstain paints

long-lasting protection

Premium thin-layer woodstain for outdoor and indoor applications.

FORTEKRYL woodstain PREMIUM is a premium water-based thin-layer wood stain with special hybrid resin, lightfast transparent pigments and special additives. Designed for outdoor and indoor coating of wood, such as doors, fences, gables, wood paneling, pergolas, furniture, etc. The finish is lightfast (contains UV filters), bonds extremely well with the surface, remains permanently elastic, features increased water repellency, levels very well, and is easy to apply.

Spreading rate: 0,05-0,08 kg/m² per layer

Packaging: 0,7 kg, 4,5 kg

Tinting: Yes



colorless



fortekryl[®]

woodstain klasik

wood protection | woodstain paints

in-depth protection of wood

Thin-layer linseed oil-based woodstain for protective coating of wood.

FORTEKRYL woodstain KLASIK is a water-based thin-layer wood stain with modified linseed oil, lightfast transparent pigments and special additives. Designed for outdoor and indoor coating of wood, such as window shutters, doors, under deck ceilings, fences, gables, wood paneling, wooden beams, garden structures and furniture, etc. The finish is lightfast (contains UV filters), remains highly elastic and water-repellant, penetrates easily into the surface and is easy to apply.

Spreading rate: 0,05-0,08 kg/m² per layer

Packaging: 0,7 kg, 4,5 kg

Tinting: Yes



| | |
|-----------|-----------|
| colorless | mahogany |
| walnut | teak |
| rosewood | pine wood |
| oak | |



fortekryl[®]

indoor varnish



wood protection | varnish protection

odorless

Varnish for protective coating of visible indoor wood and chipboard.

FORTEKRYL indoor varnish is intended for durable coating of visible indoor wood, cork tiles, plywood, planks, and chipboard. Features easy application, surface hardness, and excellent adhesion to the substrate. **FORTEKRYL indoor varnish** is available in a high gloss, semi-gloss and matt version.

FORTEKRYL indoor varnish complies to the ČSN EN 71-3 Safety of toys - Migration of certain elements European Standard. For a perfect long-lasting finish, treat the surface first with **FORTEKRYL wood penetrating primer**.

Spreading rate: 0,10-0,15 kg/m² per layer

Packaging: 0,7 kg, 1,8 kg, 4 kg

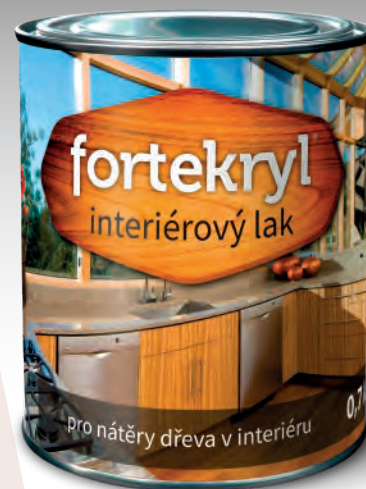
Tinting: Yes



high gloss

semi-gloss

matt



fortekryl[®]

floor varnish

for wood exposed to chemicals
and mechanical stress

wood protection | varnish protection

Polyurethane varnish for highly resistant coating of floors and furniture.

FORTEKRYL floor varnish is intended for indoor coating of wood, in particular wooden floors, parquet flooring, furniture, wooden toys, etc. Hardens very quickly to achieve an extremely hard finish resistant to abrasion, yellowing, and chemicals.

FORTEKRYL floor varnish is available in a high gloss and matt version.

FORTEKRYL floor varnish complies to the ČSN EN 71-3 Safety of toys - Migration of certain elements European Standard. For a perfect long-lasting finish, treat the surface first with **FORTEKRYL wood penetrating primer**.

Spreading rate: 0,10-0,13 kg/m² per layer

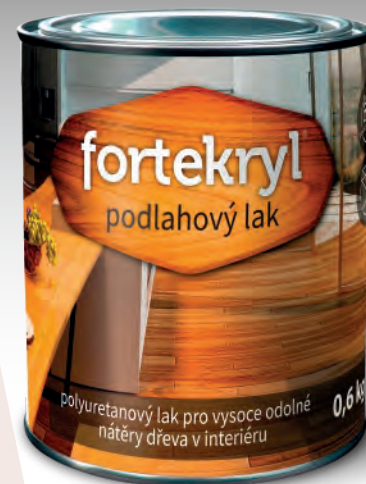
Packaging: 0,6 kg, 1,8 kg, 4 kg

Tinting: Yes



high gloss

matt



fortekryl[®]

outdoor varnish



wood protection | varnish protection

long-lasting weather protection

UV- and weather-resistant wood varnish.

FORTEKRYL outdoor varnish is intended for long-term protection of non-walkable wood in the exterior. The paint adheres very well to the substrate. Highly effective UV filters ensure great lightfastness and significantly reduce darkening of wood. Easy to apply with reduced tackiness. Penetrates deeper into the substrate than ordinary varnishes for better and longer-lasting protection. Highlights natural features of wood and creates a pleasant, warm look.

Spreading rate: 0,10-0,15 kg/m² per layer

Packaging: 0,6 kg, 1,8 kg

Tinting: Yes



matt



fortekryl[®]

wax oil

wood protection | varnish protection

walkable | with UV protection

Indoor and outdoor wood protection oil with added natural waxes.

FORTEKRYL wax oil is intended for surface treatment of both hard and soft wood, such as wooden paneling, furniture, stairs, beams, ceilings, as well as wooden terraces, pergolas, garden furniture and hardwood or tropical wood flooring. The natural wax and emulgated linseed oil-based paint contains very fine, highly transparent pigments and effective UV filters that protect wood against adverse weather and sunlight. The paint penetrates extremely well into the substrate. The coat remains permanently elastic and water-repellant. **FORTEKRYL wax oil** is to be applied with a brush.

Recommended number of layers: 2-3 layers

Spreading rate: 0,07-0,10 kg/m² per layer, depending on wood hardness

Packaging: 0,7 kg; 1,8 kg, 4,5 kg

Tinting: Yes

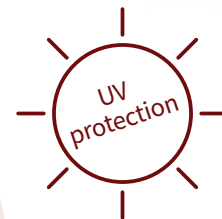


colorless

walnut

rosewood

teak



fortekryl[®]

wood penetrating primer



wood protection | prevention of infestation

in-depth protection of wood

Special penetrating paint for fungicidal and insecticidal protection of wood.

FORTEKRYL wood penetrating primer is a liquid wood preservative for in-depth protection against xylophagous insects, mould, fungi, and blue discoloration. Serves as primary preventative impregnation of wooden construction elements, fences, outdoor wooden structures, carpentry products etc.

Use biocidal products safely! Always read information on the packaging and the attached leaflet.

Spreading rate: 0,12-0,17 kg/m²
(depending on substrate absorption rate)

Packaging: 0,7 kg, 5 kg

Tinting: Yes



ETERNAL[®]

wood primer

wood protection | primer paints | sandable

wood priming

Water-based primer for wood, chipboard and wood fiber board.

ETERNAL wood primer serves as an undercoat on wooden surfaces both indoors and outdoors, such as doors and windows as well as chipboard and wood fiber board. **ETERNAL wood primer** improves adhesion between the substrate and the topcoat, fills pores and smooths the substrate, reduces bleeding of discoloration from the substrate, improving the properties of the finish.

Spreading rate: 0,10-0,20 kg/m² per layer

Packaging: 0,7 kg, 5 kg

Tinting: Pastels



white



ETERNAL[®]

universal penetrating primer



penetration | universal penetrating primer

reinforces the substrate, unifies absorption

A universal penetrating primer as an undercoat for all types of dispersion wall and facade paints that improves their adhesion.

ETERNAL universal penetrating primer serves for penetration of absorbent substrates, such as non-walkable concrete, mineral and gypsum-based plasters and plasterboard, as an undercoat for common types of dispersion paints, putties, and glues. **ETERNAL universal penetrating primer** is recommended to reinforce the substrate and improve adhesion of subsequent layers of **ETERNAL IN Thermo** thermal insulation, or **ETERNAL IN**, **ETERNAL IN plus**, **ETERNAL IN steril** and **ETERNAL IN silver** dispersion paints. **ETERNAL universal penetrating primer** is not suitable for damp substrates.

Spreading rate: 0,10–0,20 kg/m²

Packaging: 3 kg, 5 kg, 10 kg

colorless



FORTE[®] penetral



penetration | deep-penetration

special deep-penetrating primer

A special in-depth penetrating primer for substrate reinforcement and improved adhesion of subsequent layers of dispersion paints and screed sealers.

FORTE penetral is intended for penetration of concrete, plasters, cement fiber board, and plasterboard, reinforcement of the substrate and improved adhesion of subsequent layers of putty, glue, or paint. **FORTE penetral** is not suitable for damp substrates.

Spreading rate: 0,15–0,20 kg/m²

Packaging: 1 kg, 5 kg, 10 kg

colorless



FORTE[®]

adhesive primer

penetration | surface coarseness
absorbent and smooth surfaces

improves adhesion

Pigment-based paint with penetrating properties and a silica sand filler.

FORTE adhesive primer is intended as an undercoat for smooth concrete surfaces, cement fiber board, plasterboard and chipboard before the application of decorative plaster topcoats etc. Improves adhesion of subsequent layers and finishes and facilitates their application. The coating can also be used as an adhesive primer for thermal insulation, in particular styrofoam. **FORTE adhesive primer** significantly increases coarseness of the substrate, improving the holding power of plaster or glue that may be applied later.

Spreading rate: cca 0,15 kg/m²

Packaging: 1 kg, 3 kg, 12 kg

white



SANATHERM[®]

PN

penetration | thermal insulation system undercoat
absorbent surfaces

penetrating primer for facades

Deep penetrating primer for the SANATHERM and SANATHERM mineral thermal insulation systems.

SANATHERM PN serves as a penetrating primer for walls prior to the application of additional insulation or other types of topcoats. **SANATHERM PN** penetrates deep into the substrate. This ensures perfect rigidity of the surface and improves adhesion of subsequent layers (glue, paint). The penetrating primer is suitable also for indoor application as an undercoat for wall paints.

Spreading rate: 0,15–0,20 kg/m²

Packaging: 10 kg



SANATHERM[®]

PNO silicone

penetration | plaster undercoat | silicone

penetrating primer for silicone plaster

Pigment-stained penetrating primer for SANATHERM silicone plaster.

SANATHERM PNO silicone is intended for priming indoor and outdoor walls and the reinforcement layers of the **SANATHERM** and **SANATHERM mineral** thermal insulation systems. The penetrating primer ensures even absorption of the substrate and improves adhesion of **SANATHERM O silicone plaster**. **SANATHERM PNO silicone** can be tinted to match the hue of the plaster topcoat, unifying the color of the substrate and the finish.

Spreading rate: 0,15–0,25 kg/m²

Packaging: 5 kg, 20 kg

Tinting: Yes



SANATHERM[®]

PNO

penetration | plaster undercoat | acrylate

penetrating primer for acrylate plaster

Pigment-stained penetrating primer for SANATHERM acrylate plaster.

SANATHERM PNO is intended for priming indoor and outdoor walls and the reinforcement layers of the **SANATHERM** thermal insulation system, as well as rendering coats and other silicate substrates. The penetrating primer ensures even absorption of the substrate and improves adhesion of **SANATHERM O acrylate plaster**. **SANATHERM PNO** can be tinted to match the hue of the plaster topcoat, unifying the color of the substrate and the finish.

Spreading rate: 0,15–0,25 kg/m²

Packaging: 5 kg, 20 kg

Tinting: Yes



SANATHERM O

silicone plaster



plasters | silicone

self-cleaning facade

Thin-layer silicone plaster.

SANATHERM O silicone plaster is intended as a topcoat for lime, cement, and lime-cement plasters, concrete structures, or the **SANATHERM** thermal insulation system. This thin-layer silicone plaster features very good adhesion to the substrate, high resistance to alkali, weather, and UV radiation. The coat is fairly permeable to vapor while being watertight. Can be applied also to chipboard, plasterboard, cement particle board, and cement fiber board.

Spreading rate:

scrapped finish
D1,5: 2,50–3,00 kg/m²
D2: 2,90–3,30 kg/m²

smooth cast finish
Z1,5: 2,50–3,00 kg/m²
Z2: 3,00–3,50 kg/m²

Packaging: 25 kg

Tinting: Yes



white



SANATHERM[®] O

acrylate plaster



plasters | acrylate

high weather resistance

A thin-layer dispersion acrylate plaster with great workability, very good adhesion to the substrate, and high resistance to alkali, weather, and UV radiation.

SANATHERM O acrylate plaster is intended as the topcoat for the **SANATHERM** and **SANATHERM mineral** thermal insulation systems, for indoor and outdoor concrete structures, lime, cement, and lime-cement plasters, as well as chipboard and plasterboard. The coat is fairly permeable to vapor while being watertight.

Spreading rate:

| | |
|-----------------------------------|-----------------------------------|
| scrapped finish | smooth cast finish |
| D1,5: 2,50–3,00 kg/m ² | Z1,5: 2,50–3,00 kg/m ² |
| D2: 2,90–3,30 kg/m ² | Z2: 3,00–3,50 kg/m ² |

Packaging: 25 kg

Tinting: Yes



white



SANATHERM[®] B acrylate



facade paints | acrylate

long-lasting protection

Acrylate facade paint.

SANATHERM B acrylate is intended for coating of indoor and outdoor walls with lime, cement, and lime-cement plasters, polymer plasters such as **SANATHERM O**, concrete, aerated concrete, fiber cement board, splinter cement board, and plasterboard. Extends the life of the existing coating, improves resistance to water, UV radiation, and other adverse weather factors. Prevents soiling and improves washability of the facade. Reduces permeation of nitrogen oxides and sulphur oxides into the substrate.

Spreading rate: 0,30–0,50 kg/m²

Packaging: 3 kg, 6 kg, 12 kg

Tinting: Yes



white

SANATHERM[®] B

silicone

facade paints | silicone


vapor permeable, water repellent

A silicone facade paint with self-cleaning properties.

SANATHERM B silicone is intended for coating of mineral materials, such as plasters, concrete, bricks, and stone. The coat features extreme weather resistance, excellent water repellency, low water permeability, very low vapor diffusion resistance factor, and low propensity to soiling. Suitable for facades that are expected to vent out large volumes of water vapor.

Spreading rate: 0,30–0,60 kg/m²

Packaging: 3 kg, 6 kg, 12 kg

Tinting: Yes 



white

SANATHERM[®] B

silicone

PREVENSIL

facade paints | silicone

prevents mould growth on facades

Silicone facade paint highly resistant to mould, fungi, and algae growth.

SANATHERM B silicone PREVENSIL is intended primarily for outdoor application on facades with an increased risk of infestation with fungi, mould, or algae. **SANATHERM B silicone PREVENSIL** is intended for coating of lime, cement, and lime-cement plasters, acrylate, silicate and silicone plasters and paints as well as other substrates, such as bricks and stone. The coat features good UV- and weather resistance, water repellency, low water permeability, very low vapor diffusion resistance factor, and low propensity to soiling.

Use biocidal products safely! Always read information on the packaging and the attached leaflet.

Spreading rate: 0,30–0,60 kg/m²

Packaging: 10 kg

Tinting: Yes



white

ETERNAL[®]

hydrophobic paint W

hydrophobic paint | exterior

repels water, reduces propensity to soiling

A water-based hydrophobic paint preventing permeation of moisture and soiling of the surface of construction materials.

ETERNAL hydrophobic paint W is intended for the treatment of the surface of porous construction materials to reduce capillarity-driven water absorption. Suitable for plaster, stone, bricks, masonry, ceramic and concrete roof tiles, concrete elements and structures, cement splinter board and cement fiber board, stucco with cement content etc. Reduces damage to the substrate by precipitation, its soiling, algae, moss and lichen growth, minimizes lime efflorescence formation without altering the look of the material and its diffusion resistance factor.

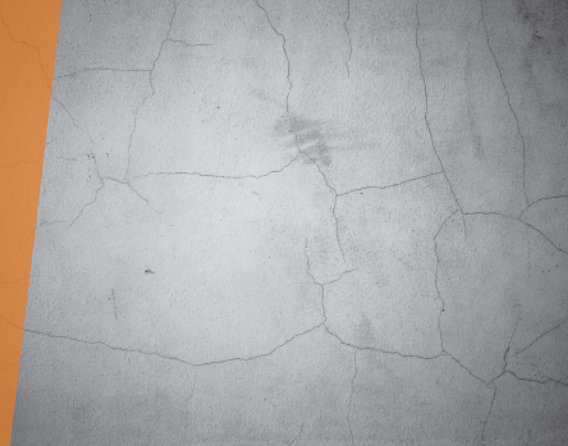
Spreading rate: 0,03-0,1 kg/m² (depending on substrate absorption rate)

Packaging: 10 kg



ETERNAL[®]

elast



facade paints | crack overlap | special

resistant to cracks and salts

Special elastic acrylate paint resistant to defrosting chemicals for anti-carbonation coating of concrete and facades with cobweb-like cracks.

ETERNAL elast protects concrete and reinforced concrete including road infrastructure against corrosion and carbonation. Recommended as a protective coating of the outer shell of buildings and structures with surface damaged by microfractures. Elasticity and resistance to defrosting chemicals, CO₂ and SO₂ make it an ideal solution to protect road infrastructure against melting salts and against concrete carbonation.

Spreading rate:

0,40 kg/m² anti carbonation paint

0,40-0,90 kg/m² for substrates with cracks

to seal cracks:

0,2 mm – 2 x 0,20 kg/m²

0,3 mm – 2 x 0,30 kg/m²

0,5 mm – 3 x 0,30 kg/m²

Packaging: 10 kg

Tinting: Yes



white



FORTISOL[®]

UNI



waterproofing | bathroom | interior

bathroom waterproofing

Single-component waterproofing undercoat for indoor tiling.

For waterproofing of concrete surfaces and walls coated with cement or lime cement plaster. Serves as an undercoat under floor and wall tiles and is suitable for waterproofing of plasterboard. Once dry, **FORTISOL UNI** creates a permanently elastic seamless watertight film.

Spreading rate: 1,50–2,00 kg/m²

Packaging: 5 kg



dark grey

FORTISOL[®]

1K

waterproofing | concrete protection
single-component

single-component waterproofing

A single-component freezeproof and waterproof screed for sealing and protection of concrete and steel structures.

FORTISOL 1K serves as an inner or outer sealant for foundations, basements, and other construction elements in new and old buildings. Once hardened, the waterproofing layer prevents groundwater ingress even under pressure from the substrate. **FORTISOL 1K** protects concrete, reinforced concrete, and steel structures against water, moisture, and adverse weather conditions, prevents CO₂ and SO₂ permeation into concrete structures of bridges, sewers, and tunnels of underground and water engineering structures.

Spreading rate:

1,00-1,50 kg/m² for pressureless sealing (minimum 2 layers)
2,00-3,00 kg/m² up to 1 m under the surface for sealing against ground moisture and rainwater
4,00-6,00 kg/m² from 1 m to 50 m under the surface for sealing against water pressure from the substrate

Packaging: 5 kg, 15 kg

dark grey



FORTISOL[®]



waterproofing | concrete protection
double-component

double-component waterproofing

A freezeproof and waterproof screed for seamless sealing and protection of concrete and steel structures.

FORTISOL serves as an inner or outer sealant for masonry, structures and foundations of both new and old buildings. Once hardened, the waterproofing layer prevents groundwater ingress even under pressure from the substrate. **FORTISOL** protects concrete structures against adverse weather conditions. Prevents CO₂ and SO₂ permeation into concrete structures of underground channels and tunnels. Also prevents permeation of radon from the subsoil and is suitable for sealing of interception pits, septic tanks, sewers, underground and water engineering tunnels (including pressurized) as well as an adhesive primer for additional concrete works.

Spreading rate:

1,00-1,50 kg/m² for pressureless sealing under tiling

2,00-3,00 kg/m² up to 1 m under the surface for sealing against ground moisture and rainwater

4,00-6,00 kg/m² from 1 m to 50 m under the surface for sealing against water pressure from the substrate

Packaging: 20 kg (15 + 5 kg)



medium grey

SANATHERM[®]

LZH

glues | insulation system

polystyrene glue

An adhesive and reinforcing agent for the SANATHERM thermal insulation system.

SANATHERM LZH serves as a glue for thermal insulation of facades with styrofoam, mineral felt, and reinforcing layers for such insulation materials in ETICS outer composite thermal insulation systems. Not suitable for metals, wood, materials with a wood content, glass, plastic, laminates, and bitumen.

Spreading rate:

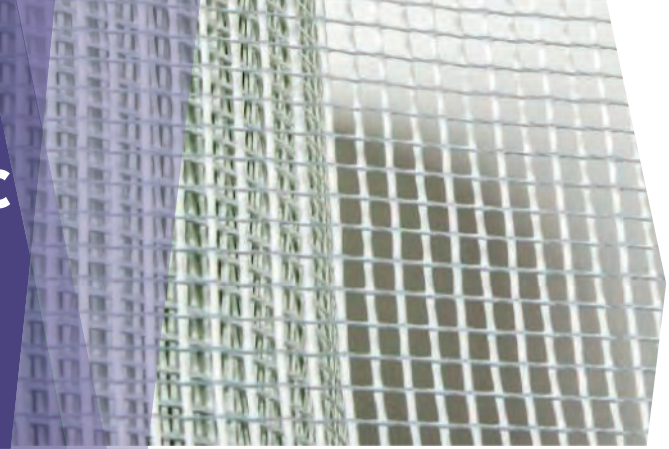
3,00 - 5,00 kg/m² as a glue for boards

4,00 - 5,00 kg/m² as a reinforcement layer
recommended layer thickness 3-6 mm

Packaging: 25 kg



Reinforcement fabric for SANAKRYL



roof paints | flat roofs

for flat roofs

Reinforcement fabric for SANAKRYL is a polypropylene mesh belt.

The fabric is intended as reinforcement of waterproofing **SANAKRYL TOP** and **SANAKRYL TOP Thermo** roof coating. Besides serving as blanket reinforcement, it ensures even thickness of the waterproofing layer across the surface. Facilitates also easy visual inspection of a **SANAKRYL TOP** and **SANAKRYL TOP Thermo coat**.

Dimensions: width 1,00 m
200 m roll



FORTE[®]

butyl sealing belt



waterproofing | special | accessories

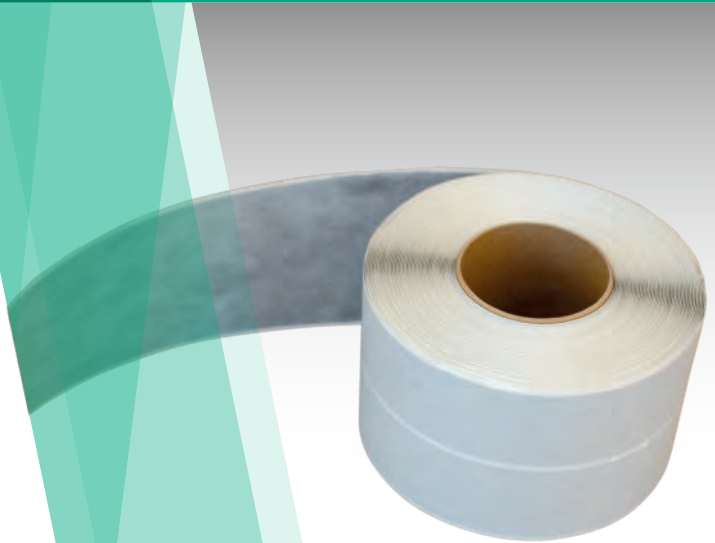
sealing of gaps and joins

Self-adhesive elastic sealing belt.

FORTE butyl sealing belt is a polypropylene-fiber felt belt with a one-sided adhesive coating. The belt is perfectly watertight and water resistant. Not resistant to oil products and organic solvents. The belt features great ductility; the butyl rubber glue shows very good adhesion to construction materials and great adhesive strength and is highly resistant to ageing. **FORTE butyl sealing belt** is intended for waterproofing systems to seal gaps and joins between different construction elements and materials, in combination with **FORTE BAK, FORTISOL, FORTISOL 1K, FORTISOL UNI, SANAKRYL TOP**. Not suitable for mechanically stressed joins.

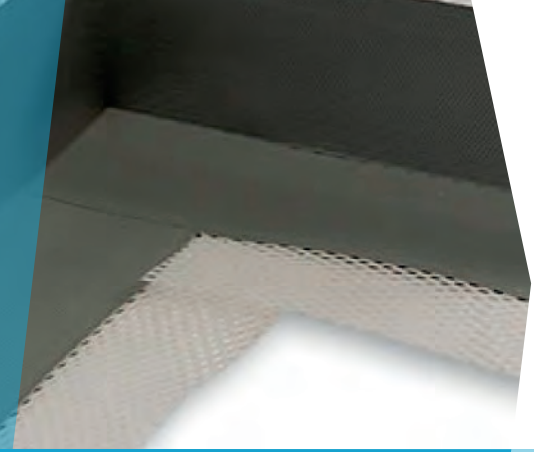
Dimensions: width 10 cm

Packaging: 20 m



FORTE[®]

elastic sealing belt and PROFI sealing belt



waterproofing | special | accessories

sealing of gaps, corners etc.

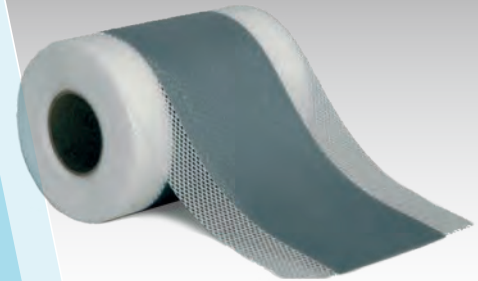
Elastic sealing belts for waterproofing systems.

FORTE elastic sealing belt is intended for waterproofing systems for permanently elastic sealing of gaps, joins between different construction elements and materials, and corners, in combination with **FORTE BAK**, **FORTISOL**, **FORTISOL 1K**, **FORTISOL UNI**, **SANAKRYL TOP**.

FORTE PROFI sealing belt is elastic, perfectly watertight and impermeable for water vapor, features high diffusion resistance for radon, great ductility, and resistance to alkaline environments, salts, and diluted acids.

Dimensions: width 12 cm

Packaging: 10 m, 50 m



FORTE elastic sealing belt



FORTE PROFI sealing belt

FORTE[®]

concrete repair

waterproofing | concrete repair | horizontal surfaces

walkable in just 2 hours

Quick-hardening substance for minor concrete works and repairs.

FORTE concrete repair is intended for minor indoor and outdoor concrete works, repairs of concrete, anchoring, filling of potholes, and repairs of horizontal surfaces. The surface will be able to bear load in a short time. Enables fast repairs of balcony structures and floors before the application of **FORTE BAK**, **FORTISOL**, **FORTISOL 1K** waterproofing. Repaired surfaces are walkable in just 2 hours. Features fast hardening, very good adhesion to the substrate, strength, frost resistance, and excellent workability. **FORTE concrete repair** is not suitable for bitumen, wood, plastics, and metals.

Spreading rate: 16 kg of dry mixture per 1 m² for a 1-cm layer

Packaging: 12,5 kg



FORTE[®]

levelling agent

waterproofing | concrete repair | vertical surfaces

for surface repairs

A levelling screed for silicate substrates.

FORTE levelling agent is intended for levelling of horizontal and vertical surfaces of cohesive silicate substrates with a single layer 2 to 30 mm thick, creation of sloped intermediate coats and thin-layer screeds both indoors and outdoors, repairs and leveling of balcony floors prior to the application of **FORTE BAK**, **FORTISOL**, **FORTISOL 1K** waterproofing, for levelling of concrete floors prior to laying a walkable surface. Features excellent adhesion to silicate substrates and a very low degree of shrinkage.

Spreading rate: 16 kg of dry mixture per 1 m² for a 1-cm layer

Packaging: 25 kg



FORTE[®] BAK

Waterproofing | Walkable | Interior and exterior use

for walkable surface waterproofing
of balconies and terraces

Two-component leveling compound for silicate substrates for interior and exterior applications.

FORTE BAK is a waterproofing compound designed for the surface restoration of damaged balconies, terraces, and loggias made of concrete, or concrete or unglazed ceramic tiles. **FORTE BAK** can be applied to damp, not yet fully cured concrete. This product can also be used to fill cracks, seal pores, and repair more severely damaged areas. **FORTE BAK** forms the final walkable surface coating. The surface of the **FORTE BAK** coating can be permanently overcoated with the coating material **ETERNAL stabil** or tiled. **FORTE BAK** is not suitable for heavily trafficked public areas or asphalt substrates. The powder component A is mixed with the liquid component B in a weight ratio of 3:1.

Consumption:

approx. 1.8 kg/m² per 1 mm layer thickness

First layer: approx. 1.0–1.5 mm, i.e. approx. 1.8–2.7 kg/m²

Final coating: approx. 2.0–2.5 mm, i.e. approx. 3.6–4.5 kg/m²

Packaging: 20 kg (15 kg component A + 5 kg component B)



grey (natural color of the raw materials)

ETERNAL[®]

antifungal deep
penetration

Primer | Deep primer | **Special**

for reducing mold formation and for deep
strengthening of absorbent substrates

For reducing mold formation, deep strengthening of absorbent substrates, and improving the adhesion of subsequent layers in interior and exterior applications.

ETERNAL antifungal deep penetration inhibits the growth of mold on treated surfaces. It is intended for priming concrete, plasters, fiber cement and plasterboard panels, wooden substrates, and unglazed ceramics. It strengthens the substrate and improves the adhesion of subsequent paints, fillers, adhesives, plasters, and leveling compounds. It is characterized by high penetration capability into absorbent materials. When applied correctly, the natural water vapor permeability of the masonry remains preserved.

Consumption: 0.10–0.20 kg/m²

Packaging: 1 kg, 5 kg



ETERNAL[®]

mould remover



indoor, outdoor | mould removal | **special**

removes mould, fungi, algae, and bacteria

Highly effective against mould, fungi, algae, bacteria, mosses, and lichens.

ETERNAL mould remover is a broad-spectrum biocidal preparation with a long-lasting fungicidal effect for treatment of infested walls, roofs, wood and other construction surfaces. For both indoor and outdoor use. The infested surface needs to be cleaned using mechanical means to remove biological growth and let dry thoroughly. **ETERNAL mould remover** can then be applied directly to the surface.

Use biocidal products safely! Always read information on the packaging and the attached leaflet.

Spreading rate: 0,10–0,20 kg/m²

Packaging: 0,5 kg, 5 kg



ETERNAL[®]

disinfecting hand gel

with antibacterial agent

Sanitary hand gel for everyday use.

ETERNAL disinfecting hand gel with a pleasant kiwi and watermelon fragrance contains 65% of ethanol and is an ideal solution for everyday protection against bacteria.

Packaging: 150 ml



ETERNAL[®]

disinfektant



Hand disinfecting agent with a virucidal effect.

ETERNAL disinfectant is intended for disinfection of human skin, primarily hands. Its effectiveness against a wide range of viruses has been proved just a few seconds after application. The disinfectant is perfumed with a pleasant watermelon and kiwi scent.

Packaging: 500 ml, 3 l, 10 l



ETERNAL[®]

cool protect technology

ETERNAL COOL PROTECT TECHNOLOGY is a range of paints with next-generation stain pigments that offer an effective solution protecting sun-exposed surfaces against overheating.



Why use paints with Cool pigments?

- reflect up to 50% of heat from the sun
- protect interiors behind coated walls against overheating
- help reduce power consumption of air conditioning in attic and rooftop flats and offices
- lower the temperature of the treated surface by 10-15 °C
- extend the life of the coating by 30% or more



anthracite COOL



AUSTIS a.s.
K Austisu 680, 154 00 Prague 5
Czech Republic
tel.: +420 251 099 111
www.austis.cz



www.barvy-eternal.cz

Edition 2025